



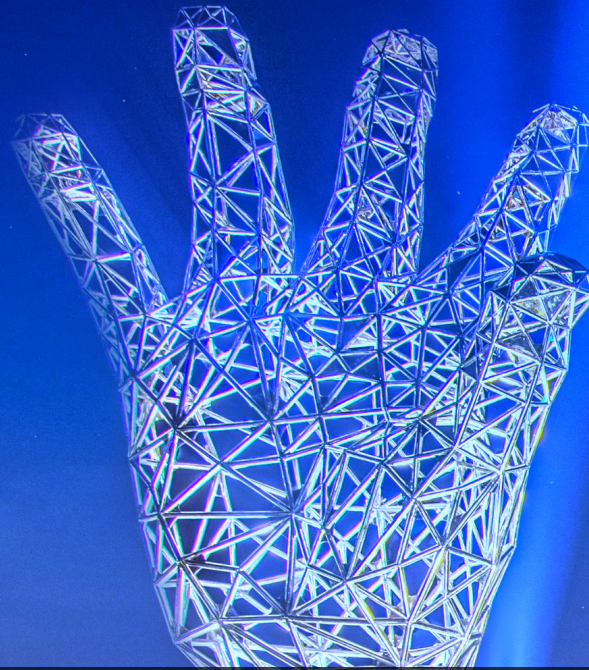
**BSEZ**  
BUGESERA SPECIAL ECONOMIC ZONE



DRIVING  
**RWANDA'S SUSTAINABLE**  
INDUSTRIALIZATION



# ABOUT RWANDA



## Facts & Figures



**Area**  
26,338 sq km

**2nd fastest  
growing economy**  
in Africa

### Population



**GDP Growth**  
10.9%

**65.3%**  
population are  
under 30-years

## ATTRACTIVE INCENTIVES & POLICIES

Rwanda has created an enabling Investment Environment by offering the following:

### Multiple incentives for exporters & priority sectors

- ✓ Preferential CIT rate
- ✓ Accelerated first year depreciation rate of 50%
- ✓ Duty-free imports of machinery & inputs within EAC

### Efficient, supported processes

- ✓ Free business registration
- ✓ Highly digitalized and efficient administration (6 hours to register a business)
- ✓ One-stop center for investors with dedicated investment acceleration and aftercare team

### Commitment to foreign ownership

- ✓ No restrictions on foreign ownership
- ✓ No restrictions on capital flows
- ✓ Capital gains exemption on sale or transfer of shares

## WHY INVEST IN RWANDA

**2<sup>nd</sup>**

Africa for Ease of doing Business  
and Global Competitiveness

**1<sup>st</sup>**

for government transparency in  
Africa

**7 years**

Corp. income tax (CIT) exemption  
for investors (investing more than  
\$50M in the country)

**FDIs:**

\$3.2BN  
in 2022

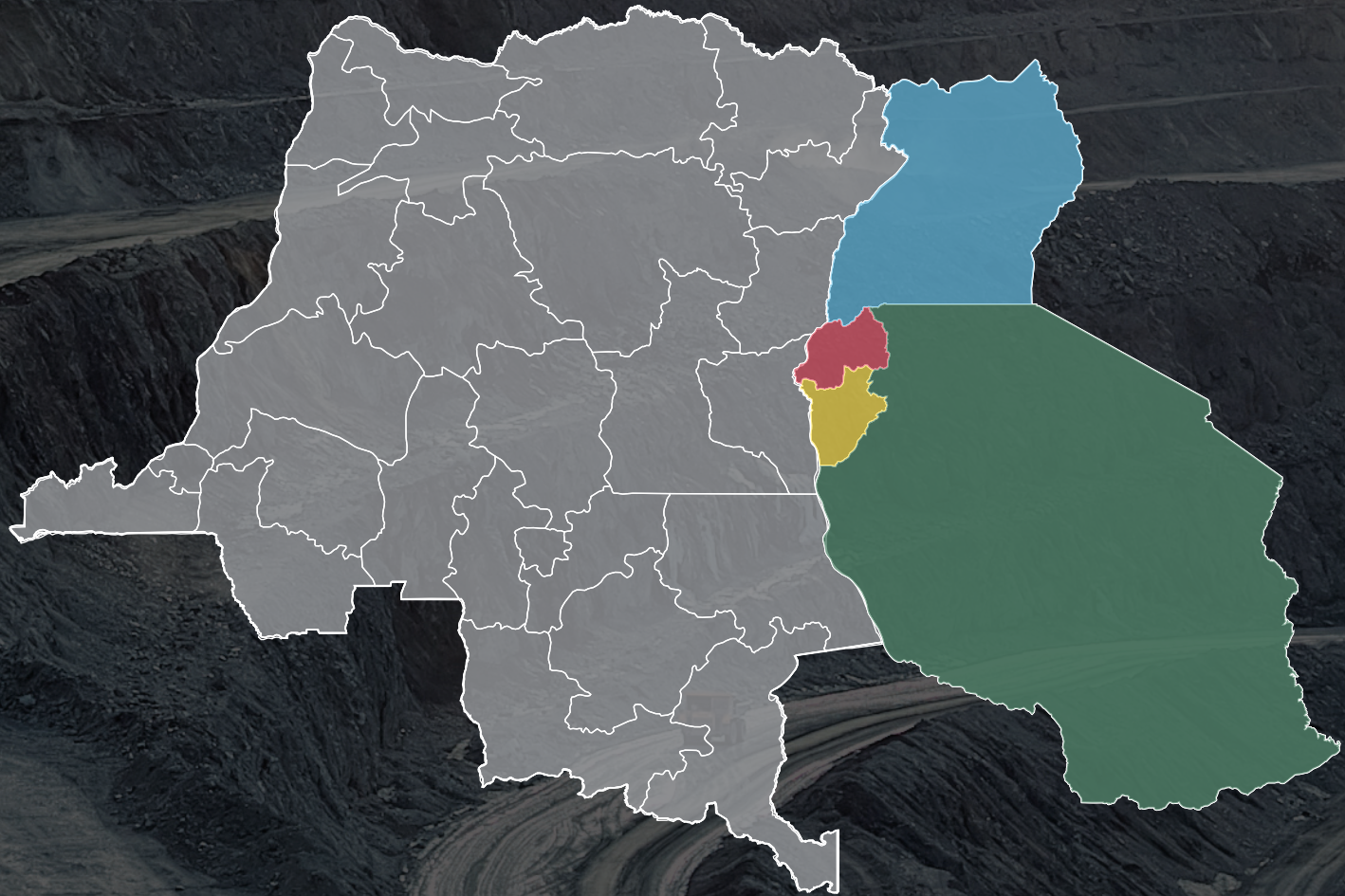
**Business environment**

assessed annually resulting in  
new investor-friendly reforms  
each year



# CONNECTIVITY & MARKET ACCESS (EAC)

Rwanda is uniquely positioned to have access to a regional market of 146 million consumers in the EAC and 460 million in COMESA. Rwanda also enjoys easy access to the eastern DRC market of approximately 35 million people.



## DRC

- ✓ 105M Population
- ✓ GDP 64.72bn (2022, World Bank)
- ✓ Population with proximity to Rwanda: 20M



## Uganda

- ✓ 48.66M Population
- ✓ GDP 45.57bn (2022, World Bank)
- ✓ Population with proximity to Rwanda: 22M



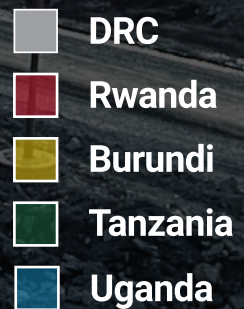
## Burundi

- ✓ 13.69M Population
- ✓ GDP 3.34bn (2022, World Bank)
- ✓ Population with proximity to Rwanda: 12.8M



## Tanzania

- ✓ 66.62M Population
- ✓ GDP 75.73bn (2022, World Bank)
- ✓ Population with proximity to Rwanda: 16M



## REGIONAL & GLOBAL TREATIES:

Rwanda has access to African and global markets through robust free trade agreements such as:

- ✓ EAC trade agreement and COMESA
- ✓ African Continental Free Trade Area (AfCFTA) agreement
- ✓ World Trade Organization (WTO)
- ✓ African Growth & Opportunity Act (AGOA)





A Public-Private Partnership between  
The Government of Rwanda and ARISE IIP

## ABOUT BSEZ

### **The most competitive zone to establish and grow your business in Rwanda**

Bugesera Special Economic Zone (BSEZ), located in the Bugesera district of Rwanda - is a Public-Private Partnership (PPP) agreement between the Government of Rwanda and Arise IIP with a committed investment of USD 100 million.

BSEZ is a fully integrated industrial ecosystem providing land lease, world-class logistics services and convenient access to market opportunities.

Through our offerings, we enable sustainable and local transformation of raw materials, boost exports, and promote trade.

Our zone is committed to the development of a more competitive economy by unlocking the country's industrial potential. We seek to transform Rwanda into a regional manufacturing powerhouse within the continent, while leveraging its carbon endowment in the pursuit of green growth.

Occupying a total area of 335.67 Ha. situated in the district of Bugesera. BSEZ strategic location is about 57 kms from the capital city Kigali and only 20km from the new Bugesera International Airport (under construction) while being well connected to the nearby ports and neighbouring countries.





RWANDA BULK BLENDING FERTILIZER



# ACCESSIBILITY

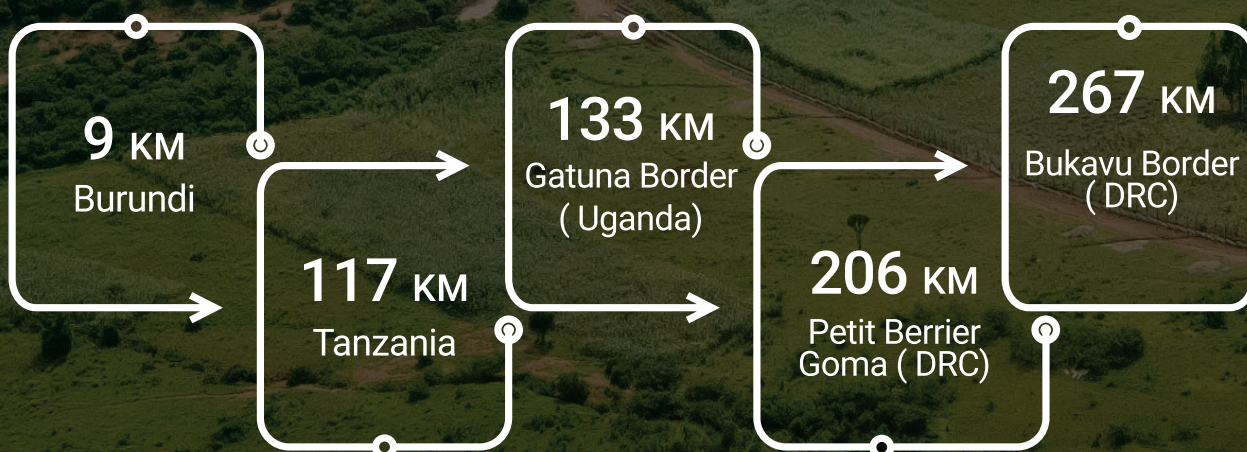
## RWANDA

### ACCESSIBILITY TO

	Kigali City	50km
	Bugesera Airport (New)	20km
	Dar es Salam Port (Tanzania)	1470km
	Mombasa Port (Kenya)	1680km

# CONNECTIVITY

Border distance from site to neighboring countries.





# INVESTMENT OPPORTUNITIES/ INDUSTRIES

---

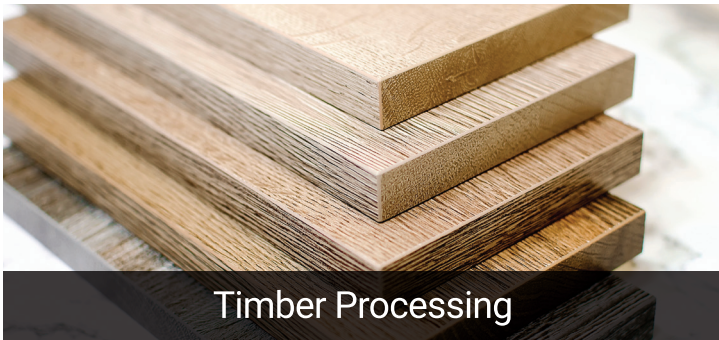
Industries and sectors that thrive and grow at BSEZ:



Agriculture & Agro Processing



Meat Processing



Timber Processing



EV SECTOR



Garment & Textile



Glass Manufacturing



Plastic Processing



Construction Material



# FACILITIES/ SERVICES

**BSEZ is setup to provide all your business needs**



Single Window Clearance for all government-related approvals and permits



Warehouse



Industrial Shed



Internal dedicated utilities



Estate Management



Police Station



Fire Station



Logistics Zone



Residential Land



Sewage Treatment

# OBJECTIVES



Raw Material Transformation



Export Enhancement



Import Substitution



Increase FDI Inflow

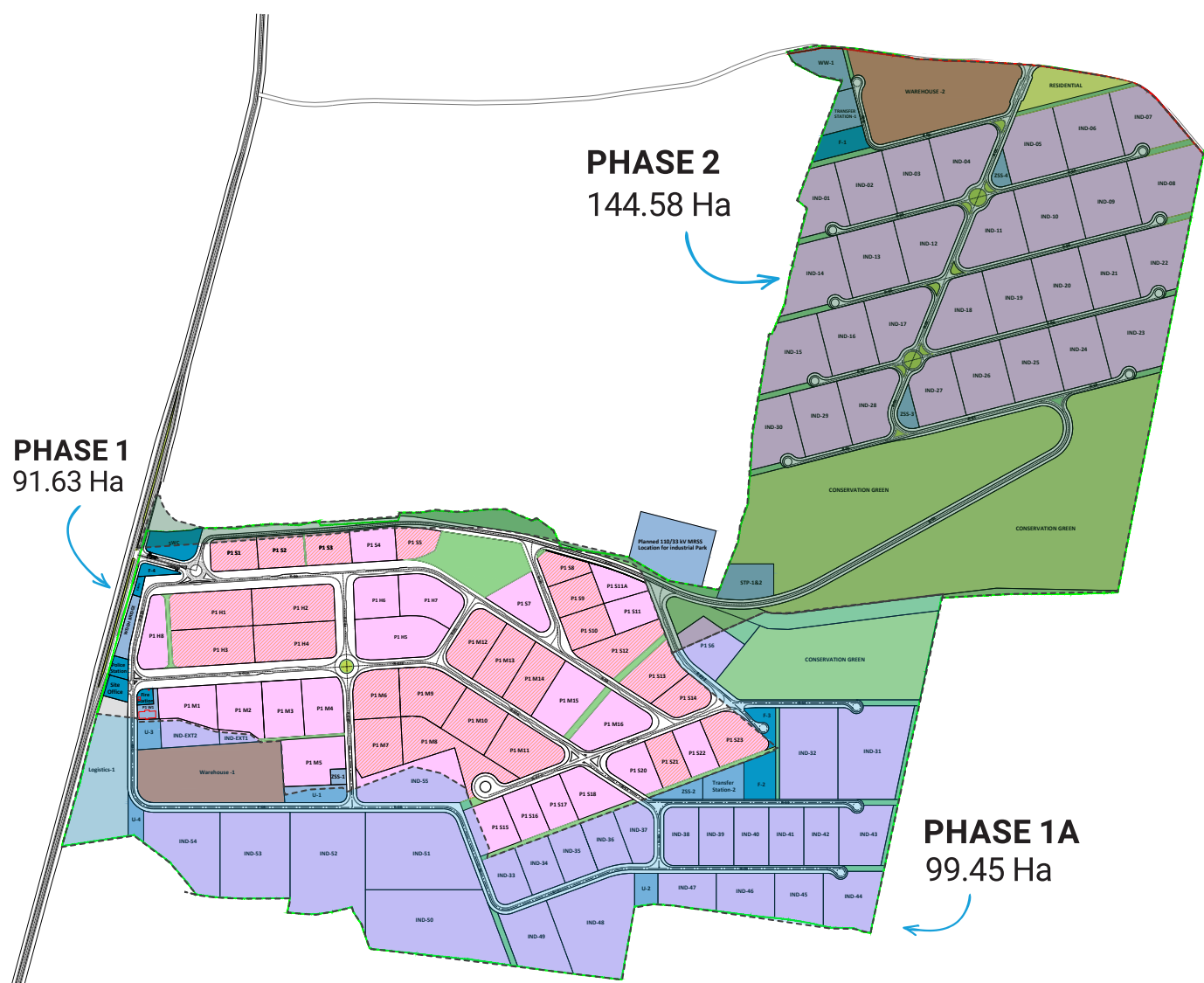


Job Creation





# READINESS



Phase 1  
Completed

Phase 1A  
Available by April 2025

Phase 2  
Available by Dec 2026

91.63 Ha

99.45 Ha

144.58 Ha







Industry Under Operation



Administration Office



Welcome Gate





# SUSTAINABILITY

Sustainable development initiatives are integrated into our business activities and are carefully planned through the involvement of relevant government regulators, civil society groups, and other stakeholders.

Our parent company, ARISE IIP, adopts the philosophy of 'growing with society', through sharing benefits in a transparent and mutually beneficial manner.

Our sustainability initiatives are aligned with United Nation's Sustainable Development Goals, and we are determined to create a higher standard of living for all people, generate benefits and opportunities within local communities, and provide technical and vocational training to enhance local capacity. Our industrial platform will primarily focus on timber processing, and our major goal is to modernize and catalyze growth within the wood sector while keeping best practices in sustainability at the core of our activity. Sustainability, traceability, and certification are among our top priorities.

In BSEZ, we have designated 50 hectares at the heart of the zone for carbon sequestration, aligning with our commitment to the Sustainable Development Goals (SDGs) and advancing our vision of achieving carbon neutrality.



At BSEZ our key priority is to create a sustainable green zone by following the below approach across our practices:

### Carbon Neutrality



Our goal is to achieve carbon neutrality by gradually eliminating intensive carbon energy sources, through targeted initiatives

### Diversity and Inclusion



We aim to increase diversity across all levels of our organization, through dedicated programs

### Circular Economy



We strive to reduce wastage of resources by carefully integrating circular economy principles into our business strategy and operations

### Responsible Supply Chain Management



We identify supply chain risks and take proactive measures to implement responsible procurement practices and boost stakeholder engagement





**BSEZ**  
BUGESERA SPECIAL ECONOMIC ZONE

## CONTACT DETAILS

☎ +250 790000008

✉ [bsez@arisenet.com](mailto:bsez@arisenet.com) 🌐 [www.bsez-rwanda.com](http://www.bsez-rwanda.com)