

## 0 INCAMAKE IDASANZWE

### 0.1 INTANGIRIRO

Icyanya cy'inganda cya Bugesera kizwi nka Bugesera Special Economic Zone (BSEZ) gifite ubuso Bungana na hegitari 335.68 kikaba gihereye mu mudugudu wa Kagasa ya II, Akagari ka Ramiro, Umurenge wa Gashora, Akarere ka Bugesera, Intara y'Iburasirazuba. Mu mwaka 2022, ikigo **ARISE Integrated Industrial Platforms (IIP)** cyahawe icyo cyanya cyose kugirango kigitunganye neza bityo kibashe gukora ibikorwa cyagenewe. Mu rwego rwo gutunganya iki cyanya, ikigo ARISE IIP na Leta y'u Rwanda bagiranye amasezerano ari nayo yabyaye ikigo cyitwa Bugesera Special **Economic Zone Limited (BSEZ Ltd)** ari nacyo nyiruyu mushinga.

Mu rwego rwo gusesengura imiterere y'icyanya ndetse no gusuzuma ingaruka zacyo kubidukikije, BSEZ Ltd yahaye akazi ikigo Environmental Resources Management Southern Africa kizwi nka "ERM" inshingano zo gusuzuma ingaruka ku bidukikije z'uwo mushinga. Icyo kigo "ERM" cyakoranye n'abafatanyabikorwa bacyo ba hano mu Rwanda, ndetse n'ikindi kigo cyitwa Earth Systems nk'inzobere muri ubu busesenguzi.

Ubu busesenguzi bw'ingaruka kubidukikije z'umushinga bwari bwateguwe gukorerwa kuri hegitari 335.68 bugatanga amakuru yose akenewe, aho kugeza mu mwaka wa 2011, hegitari zigera kuri 200 zari zimaze guhabwa uruhushya rwo kuba zakorerwaho ibikorwa by'inganda ntakibazo. Ibirenze kuribyo, BSEZ Ltd igamije kubona uruhushya rumwe rukubiyemo hegitari 134.38 zasigaye nkuko byumvikanyweho mu nama yabereye ku biro bya RDB kuwa 18 Kamena 2023 hagati ya ARISE, ikigo cy'Igihugu gishinzwe iterambere (RDB) ndetse n'inzobere yakoze kuri ubu busesenguzi ariyo Earth Systems. Nyirumushinga-BSEZ Ltd yasabye muri RDB uburenganzira bwo gukora ubusesenguzi bw'ingaruka z'umushinga kubidukikije bugendanye n'ibisabwa n'amabwiriza agenga ubusesenguzi bw'ingaruka ku bidukikije mu Rwanda.

### 0.2 IMPAMVU HAKENEWE ISUZUMA RY'INGARUKA KU BIDUKIKIJE, IMIBEREHO MYIZA N'UBUKUNGU

Mu gihe Minisiteri y'ubucuruzi n'inganda (MINICOM) yakoraga raporo y'isuzuma ry'ingaruka z'umushinga kubidukikije z'icyanya cy'inganda cya BSEZ mu mwaka wa 2011, hatanzwe uruhushya kuri hegitari 200 gusa zari zakorewe isuzuma ry'ingaruka kubidukikije ryemewe. BSEZ LTD, nka nyir'umushinga, arashaka kubona uruhushya rwa hegitari 134.38 zitatangiwe uruhushya muri 2011.



Iyi raporo y'isuzuma ry'ingaruka ku bidukikije yateguwe hagendewe ku iteka rya minisitiri No.001/2019, rishyiraho urutonde rw'imishinga igomba gukorerwa isuzuma ry'ingaruka kubidukikije, amabwiriza, ibisabwa n'ibibikurikizwa mu gukora isuzuma ry'ingaruka kubidukikije. Ugendeye ku mugereka wa I wiryo teka, uyu mushinga ugomba kubona isuzuma ry'ingaruka kubidukikije ryuzuye, kuko umushinga ubarizwa mu ngingo ya 12 yahariwe inganda ndetse n'ingingo ya 9 yahariwe ububiko bw'ibicuruzwa burengeje metero kare 1500, hamwe n'ingano y'ikibanza irenga metero kare 1000. Isuzuma ry'ingaruka kubidukikije nanone ryashingiye ku mahame y'ikigega mpuzamahanga gishinzwe imari cyitwa International Finance Corporation (IFC).

### 0.3 INTEGO Z'UMUSHINGA

Guhinduka kugirango utere imbere ni imwe mu nkingi eshanu za mwamba z'icyerecyezo 2050 u Rwanda rwihaye, igamije guteza imbere agaciro n'ihangana ry'inzego z'ubukungu ariyo nzira ibyara imirimo, bigafasha kuvana abaturage n'ubukungu mu buhinzi busanzwe tugana mu nganda n'ubukungu bushingiye kubumenyi bigamije iterambere rirambye.

Kubwiyo mpamvu, Leta y'u Rwanda irashaka kuzamura urwego rw'inganda harimo n'icyanya cy'inganda cya Bugesera (BSEZ), guhanga imirimo no kongera umusaruro. Intego nyamukuru z'icyanya cy'inganda cya Bugesera ni izi zikurikira:

- Guteza imbere no gukurura ishoramari ry'inzego zinyuranye z'ubuhinzi, inganda, ubucuruzi, na serivisi hashishikarizwa gushinga inganda
- Gushyigikira no gufasha abashoramari gushinga inganda zikora, gukora ibicuruzwa byongerewe agaciro cyangwa gutanga serivisi, kugirango hongere ibyoherezwa mu mahanga no kugabanya icyuho cy'ibicuruzwa u Rwanda rutumiza mu mahanga.
- Gushyiraho ibikorwa remezo bigezweho bifasha ibice by'inganda binyuranye muri BSEZ kuzamura umusaruro
- Guteza imbere igice cya **logistique** harimo ububiko nkigice cy'ingenzi cya BSEZ kugirango gikemure ibigendanye na **logistique** bikenerwa n'abakoresha icyanya cy'inganda harimo n'ibigo by'ubucuruzi, no gushyira k'umurongo, mu buryo bwihariye, urujya n'uruza rw'amakamyuri muri BSEZ hagamijwe guteza imbere iterambere ry'inganda.
- Kubyara imirimo no gufasha urwego rw'inganda murwego rwa BSEZ kugera kumusaruro mwinshi.

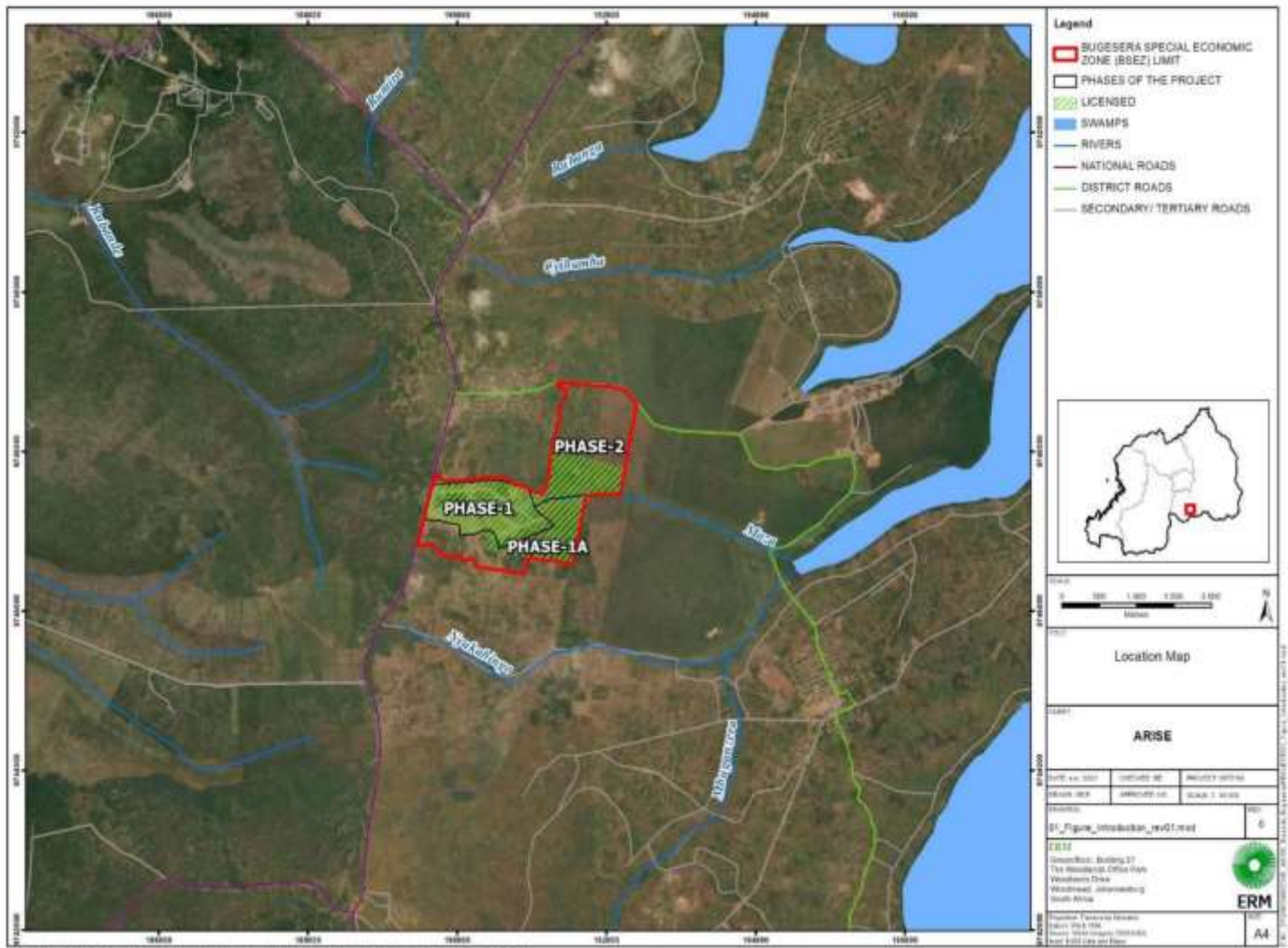


## 0.4 INCAMAKE Y'UMUSHINGA

### 0.4.1. AHO UMUSHINGA UHEREREYE

Umushinga uherereye mu ntara y'Uburasirazuba mu Rwanda, mu Karere ka Bugesera, ku birometero 56 uvuye mu murwa mukuru w'igihugu Kigali, kumuhanda munini NR5, ukikije ako gace uturutse I burengerazuba. Umushinga ugerwaho byoroshye unyuze ku muhanda munini NR5 uhana imbibi icyiciro cya 1 uhereye kumupaka wiburengerazuba. Hari n'umuhanda unyura mu rusisiro rwa Kagasa, uhana imbibi n'umushinga uva mu majyaruguru.

Inzira nyamukuru zo gutwara abantu n'ibintu zikora kucyanya cy'inganda cya Bugesera ni: Umuhanda uteganyijwe kugera ku kibuga cy'indege cya Bugesera ureshya na kilometero 24,5, Umuhanda ugera ku cyambu cya Dar-es Salam (Tanzaniya) ureshya na kilometero 1,470 ndetse n'umuhanda ugera kububiko bw'ibicuruzwa bwa DP World Dry Port Kigali ureshya n'ibirometero 68. Kubyerekeranye n'ibikorwa remezo bituriye icyanya cy'inganda, hari agace k'imiturire iteye imbere (Kagasa) gaherereye hafi kuri metero 300 muburengerazuba uvuye ku cyiciro cya 2 na metero 700 kugera mumajyaruguru yicyiciro cya 1. (Reba munsu Ikarita ihashushanyije: Figure 1)



**Figure 1: IKARITA IGARAGAZA AHO UMUSHINGA UHEREREYE**

#### 0.4.2. IBICE BIGIZE UMUSHINGA

Ibice bigize umushinga bikurikira birasuzumwa kuri uyu mushinga:

- ❖ **Igice cy'ingenzi:** Igice cy'ingenzi kigizwe n'inyubako zubatswe kandi zikoreshwa na nyiri umushinga (BSEZ) hamwe n'ibikorwa bifitanye isano itaziguye n'ubwubatsi n'imikorere yabyo.

Muri byo harimo:

- Inyubako z'inganda;
- Ibiro by'Ubuyobozi;
- Inyubako z'ububiko;
- Amazu yo guturamo;

- Uruganda rusanze rutunganya imyanda ituruka mu cyanya cy'inganda;
- Inyubako imwe itangirwamo ibyangombwa by'inzego za leta zifite aho zihuriye n'ubucuruzi (Ikigo cy'imisoro n'amahoro (RRA), Ikigo cy'igihugu gishinzwe ibiribwa n'imiti (Rwanda FDA), RURA, RICA, n'ibindi);
- Imiyoboro y'amazi yanduye yakoreshejwe;
- Ibiro bya buri duce tuto;
- Imiyoboro y'amashanyarazi;
- Imihanda ihuza uduce tunyuranye;
- Ibigega byo gufata no kubika amazi;
- Ubusitani;
- Aho amakamy ahagarara azanye cg ategereje imizigo;
- Sitasiyo ishinzwe gucunga no kuzimya inkongi z'umuriro;
- Ikigo Nderabuzima;
- Kantine;
- Ikigo cyigisha ubumenyi ngiro;
- Aho imodoka zitwara abantu zihagarara na kiyosike zitangirwamo ibiryo;
- Ubwiherero rusange;
- Amatara yo kumihanda;
- Ibikorwa remezo bikikije icyanya cy'inganda (uruzitiro)
- Sitasiyo yohereza imyanda ikomeye

❖ **Ibice bifatanye isano (inyubako zifatanye isano):** Inyubako z'abandi bantu cyangwa ibigo, zubatswe cyangwa zaguwe nk'igice cy'umushinga kandi zifite uruhare mugukora neza kw'umushinga. Muri zo harimo, sitasiyo yibanze yakira amashanyarazi (Main Receiving Sub-Station) n' umuyoboro w'amashanyarazi wa 110kv woherejwe na REG winjira mu cyanya cy'inganda cya Bugesera. Ibikorwa bijyanye no kubaka no gukoresha ibyo bikorwa remezo nabyo bifatwa nkibigize ibifatanye isano. Nkuko ibice byigenzi bigenzurwa n'umushinga, BSEZ Ltd iteganya kugira urwego ruto rwo kugenzura ibikorwa remezo bishamikiye kubindi bigo

❖ **Ibindi bikorwa by'abandi:** Ibikorwa remezo byubatswe cyangwa bikoreshwa n'abandi bantu, ndetse n'ibikorwa bibishamikiyeho, bitari ingenzi mu bikorwa bya buri muni by'umushinga. Ntabwo biri muri AOI z'umushinga, kandi harimo imihanda igera kumuhanda munini, uruganda rukora amashanyarazi rukomatanyirijwe hamwe, amabuye ya kariyeri hamwe n'imyanda (kubitsa imyanda, ibikoreshe byacukwe bishobora kongera gukoreshwa mu gutunganya ahantu hahanamye).



### 0.4.3. ICYICIRO CYO KUBAKA

Imirimo yateganyijwe yo kubaka igice cya (Phase 1A na 2) ntishobora gutangira hatabanje kuboneka uburenganzira bushingiye ku nyigo y'isuzuma ry'ingaruka ku bidukikije n'imibereho myiza. Twibuke kandi ko imirimo yo kubaka icyiciro cya mbere irimo gukorwa hagendewe kuruhushya rwatanzwe n'ikigo cy'igihugu gishinzwe iterambere (RDB) muri Mata 2012 hagendewe kuri raporo y'isuzuma ry'ingaruka ku bidukikije n'imibereho myiza ryari ryakozwe icyo gihe (Nimero y'uruhushya ni: RDB/3/EC/JDK/97/04/12). Kubaka igice cya mbere (Phase1A) n'icya kabiri (2) by'uuyu mushinga biteganyijwe gutangira nyuma yo kubona uruhushya rw'isuzuma ry'ingaruka ku bidukikije n'imibereho myiza rutangwa n'ikigo cy'igihugu gishinzwe iterambere (RDB), bikazamara hagati y'amezi 24 na 30. Imirimo y'ibanze ibanziriza ubwubatsi bw'igice ya mbere (Phase1A) iteganyijwe mu mezi ya mbere y'umwaka wa 2024.

Imirimo yo kubaka ibikorwa remezo byibanze izaba ikubiyemo kubaka ibikorwa bikurikira:

- Gutegura ahazakorerwa imirimo y'ubwubatsi no kujugunya imyanda n'ubutaka bidakenewe
- Imirimo yo gusiza neza ahazajya Inyubako zinyuranye
- Imihanda ihuza uduce dutandukanye
- Imigezi karemano
- Imiyoboro y'amazi y'imvura
- Imiyoboro y'amazi meza
- Imiyoboro yo kuzimya inkongi z'umuriro
- Imiyoboro y'amazi yanduye yakoreshejwe
- Imiyoboro y'amashanyarazi
- Imiyoboro y'itumanaho
- Ubusitani
- Inyubako y'ubuyobozi
- Inyubako z'abakozi ba nyakabyizi n'ubuyobozi bwabo
- Ahakorerwa ubujyanama, ubushakashatsi n'iperereza
- Uburyo n'ibikoresho byo gucunga umutekano
- Ahantu nyaburanga no kurangiza imirimo yanyuma

### 0.4.4. ICYICIRO CYO GUSHYIRA MU BIKORWA

Ugengeye ku gishushanyo mbonera, inyubako rusange zizacungwa na BSEZ Ltd, naho ibigo bifite amashanyarazi munshingano mu Rwanda aribyo (REG na EDCL) bizaba bifite inshingano yo gucunga ibikorwa remezo byose bizana bikanatunganya umuriro w'amashanyarazi ukenerwa mu cyanya cy'inganda cya Bugesera.



BSEZ Ltd izaba ishinzwe gukora no gufata neza ibikorwa remezo bikorera abakodesha, urugero nko gutanga amazi, uruganda rutunganya amazi / gutunganya amazi, gutanga gaze, amashanyarazi, gufata neza imihanda, gutunganya ubusitani, n'umutekano rusange.

#### **0.4.5. ICYICIRO GISOZA**

Kuri uru rwego rw'ishyirwa mubikorwa ry'umushinga, nta gahunda ihari iteganyijwe yo gufunga cyangwa gusana ibice bigize umushinga. Biteganyijwe ko hazajya habaho kuzamura urwego cg gusana ibikorwa remezo bigize umushinga bigendanye na gahunda yateguwe. Ibi bizakorwa hagendewe ku mahame n'amabwiriza bya kinyamwuga bikoreshwa mu Rwanda ndetse n'amabwiriza agenga ibidukikije n'imibereho myiza y'abaturage.

Mugihe runaka kiri imbere, umushinga wose cyangwa ibice byawo bizafungwa kandi bisenywe-uhagaritswe. Ibi bizakorwa hubahirijwe amategeko agenga ibidukikije n'imibereho myiza y'abaturage icyo gihe akurikizwa, harimo n'igihe kinini giteganijwe kongera gukoresha ibikoresho.

#### **0.5. AHO UMUSHINGA UZAKORERA IBIKORWA BYAWO**

Ubuso uyu mushinga uzakoreraho harimo ubuso bwose ibikorwa by'umushinga byose bizakorerwaho kumuzenguruko ufite akarambararo ka kilometero imwe uvuye ku cyicaro cy'umushinga rwagati, zikaba zikubiyemo ubuso bwose buzagirwaho n'ingaruka zako kanya cyangwa izitari ako kanya kubidukikije bihari, ubuzima, imibereho myiza n'umuco by'abaturage.

Nanone, imibereho y'ahazakorera umushinga ikoreshwa mugusobanura imbibi z'ubuso buzakorerwaho ibikorwa by'umushinga mu buryo butaziguye. Kubwintangiriro y'imibereho shingiro, agace k'umushinga kakoreweho ubushakashatsi gakubiyemo imiturire yegereye umushinga gashobora guterwa n'imivurungano ituruka ku mirimo y'ubwubatsi izana imikungugu, urusaku n'imyuka ihumanya ikirere. Harimo kandi uduce duturiye umushinga dushobora kungukirwa bitewe n'amahirwe ajyanye numushinga, nk'akazi, iterambere ry'ubukungu bwaho, urujya n'uruza rw'abantu ningaruka zijyanye n'ubukungu butaziguye, nibindi.

Byongeye kandi, biteganyijwe ko umushinga uzakurura abantu benshi baza mu gace urimo kandi ukongera ibikorwa remezo, ubwikorezi na serivise byaho, bigira ingaruka nziza y'iterambere ku midugudu ikikije aho umushinga ukorera. Kubwiby rero, imbibi z'umushinga zingana na kilometero 10 isobanurwa kandi igasuzumwa muri iyi ESIA kandi ikubiyemo aho hashobora kubaho ingaruka zitaziguye cyangwa zitaziguye ku mibereho cyangwa umuco.



## 0.6. URUHARE RW'ABAFATANYABIKORWA

Gahunda yo gukorana n'abafatanyabikorwa yakozwe kugirango ikemure ibisabwa n'isuzuma ry'ingaruka kubidukikije n'imibereho myiza mu byiciro byose (Icyiciro cya mbere(Phase 1), Icyiciro cya (Phase 1A) n'icyiciro cya kabiri (Phase 2)) cy'umushinga. Mu gihe ubu buryo bwatumaga abakora isuzuma bashishikarizwa gufatanya n'abafatanyabikorwa kubw'inyungu zabo n'impungenge zishingiye ku bibazo byinshi n'impungenge zijyanye n'umushinga, twakagombye kumenya ko BSEZ ltd yinjiye muriyi gahunda igihe ibikorwa by'icyiciro cya mbere byari byaramaze gutangira.

Guhitamo no gusesengura abafatanyabikorwa byari ikintu cy'ingenzi . Intego y'iyi ntambwe kwari ugutanga ishusho rusange y'abafatanyabikorwa bose. Byari ngombwa kumva uburyo buri wese mu bafatanyabikorwa ashobora kugirwaho n'ingaruka, kugirango uruhare rwabo rusobanurwe kandi barumenyeshwe barwumve mu buryo bwabo banarusobanukirwe muburyo bwabo bwitex.

Mu gihe cy'inama nyunguranabitekerezo, abafatanyabikorwa bagaragaje ibitekerezo byabo n'akababaro k'ibikorwa byo mu cyiciro cya mbere (Phase 1), banatanga ibitekerezo n'ibyifuzo byo gushyira mu bikorwa icyiciro cya (Phase1A) na 2 byari bigeye kuzakurikira ho. Ibiganiro by'amatsinda byibanze ku bahagarariye umudugudu, akagari n'umurenge byakozwe hamwe n'urubyiruko, abagore, n'abantu babana n'ubumuga. Urutonde rurambuye rw'abafatanyabikorwa babajijwe rwashyizwe muri gahunda yo gukorana n' abafatanyabikorwa izwi nka (SEP) yateguwe nk'igice cy'iri suzuma ry'ingaruka kubidukikije, imibereho myiza n'ubukungu.

Ibijyanye n'amahirwe yo kubona akazi, cyane cyane ku rubyiruko, byateguriwe ku rwego rw'imidugudu kuko ari imwe munyungu nyamukuru iteganijwe, ibyo bikaba byitezwe ku baturage bo mu cyaro gihereye hafi y'iterambere ry'umushinga. Byagaragaye ko inganda zo muri BSEZ Icyiciro cya mbere(Phase 1) zashyize imbere abagore n'urubyiruko mu gutanga akazi.

Hari ibibazo by'ingenzi byagarutsweho bijyanye n'imitunganyirize y'icyiciro cya mbere (Phase 1) cya BSEZ. Bamwe mu baturage bimwe bagizweho ingaruka n'umushinga bagaragaje ibibazo bijyanye n'uruhare ruto mu gihe cyo gukorana n'abafatanyabikorwa, kwimuka kubw'ibikorwa by'inyungu rusange ndetse n'indishyi bahawe. Mu gihe ibyo ari ibibazo by'amateka byariho mbere y'ishyirwaho rya BSEZ Ltd, ibibazo bikomeje gukemurwa hifashishijwe uburyo bwo kurenganurwa bwashyizwe muri gahunda yo gukorana n'abafatanyabikorwa izwi nka SEP no gukorana n'inzego bireba harimo leta, abaturage n'inganda ziriho ubu.

## 0.7. INGARUKA Z'INGENZI ZAGARAGAYE N'IBYIFUZO

Gahunda y'isuzuma ry'ingaruka ku bidukikije n'imibereho myiza yakozwe yagaragaje kandi isuzuma ingaruka zishobora kuba ku butaka, ibinyabuzima, n'imibereho myiza y'abatariye icyanya cy'inganda cya Bugesera. Aho ingaruka zagaragaye, ingamba





zikwiye zagiye zifatwa mu isuzuma ry'ingaruka ku bidukikije, imibereho myiza n'ubukungu. Twakibutsa ko mu ngaruka nyinshi zagaragaye, ingamba zafashwe zizagabanya k'uburyo bwa burundu cyangwa kurugero rwiza ubukana bw'izo ngaruka. icyakora, ku ngaruka zimwe na zimwe, nubwo izo ngamba zafashwe, ingaruka ndakurwaho zizagumaho. Izo ngaruka ndakurwaho burundu zifite ubukana buciriritse, kandi zisaba ingamba zihariye ku buyobozi buzishinzwe harimo:

- Ihungabana ry'ubutaka no gukuraho ibimera, kimwe no kugenda kw'imashini nini zishobora kugira uruhare mu kurushaho, gukwirakwiza cyangwa gushiraho ibimera bidasanzwe bihari, bigatuma habaho kwangirika kw'imiterere karemano y'ahantu ndetse n'urusobe rw'ibinyabuzima ruhasanzwe.
- Ingaruka z'umurage ndangamuco zijyanye no guhungabanya ubutaka binyuze mu bikorwa byo gusiza ahazubakwa inyubako n'imihanda bigatuma habaho gucika kw'ikimera cyitwa umubirizi gikoreshwa cyane mu buvuzi gakondo bw'abahaturiyeye. Ingaruka zitaziguye ntizishobora kugabanuka keretse iyo haza kubaho mbere uburyo bwo guhindura igishushanyo mbonera ku rwego rwa mbere. Urebye ibimera bikikije imbibi z'umushinga, gushyiraho uduce turinzwe tubujijwemo ibikorwa byajyaga kugabanya ingaruka zagaragajwe.
- Gutakaza burundu imibereho cyangwa amafaranga yinjira mu rugo kubera gutakaza burundu ubutaka bwatwawe n'umushinga. Ingaruka zagaragaye mugihe cy'ubwubatsi zizatera gutakaza ubuso bwakoreshwaga mubuhinzi bw'ibihingwa ngandurarugo.

Gahunda y'isuzuma ry'ingaruka ku bidukikije, imibereho myiza n'ubukungu ntigomba kugarukira gusa ku kohereza raporo yayo hamwe na gahunda yo kuyikurikirana muri RDB. Nyuma yo kuyohereza, hazakenerwa imirimo ikomeza gukorwa kugirango ikemure ingaruka ziteganijwe zagaragaye muri raporo y'isuzuma ry'ingaruka ku bidukikije, imibereho myiza n'ubukungu. Igenzura rizakorwa (n'abagenzuzi b'imbere cyangwa abagenzuzi bo hanze) kugirango hubahirizwe ibisabwa n'amategeko kimwe no gusuzuma imikorere y'ibikorwa ndetse n'izindi ngamba zigamije kugabanya ingaruka zishobora guterwa.

Mu gihe impinduka zose ziteganijwe mugihe kizaza, izo mpinduka zizasuzumwa hakurikijwe ubushobozi bwazo bwo guhindura ibyavuye mu isuzuma ry'ingaruka ku bidukikije, imibereho myiza n'ubukungu, nibiba ngombwa, ingamba zikubiye muri gahunda yo gukurikirana ingaruka zagaragajwe zizahindurwa kugirango ingaruka mbi zigabanuke kandi ingaruka nziza zongerewe.

Kugirango utange umurongo mwiza wo gucunga neza ingaruka zagaragaye mu isuzuma ry'ingaruka kubidukikije, imibereho myiza n'ubukungu (zaba nziza cyangwa mbi), gahunda isanzweho yo kubungabunga ibidukikije n'imibereho myiza izwi nka



(ESMS) igomba gukenera kuvugururwa kugirango igaragaze ibyavuye mu isuzuma ry'ingaruka kubidukikije, imibereho myiza n'ubukungu.

Gahunda isanzweho yo kubungabunga ibidukikije n'imibereho myiza izwi nka (ESMS) ivuguruye izatanga uburyo bwo kumenya neza ko ingamba zagaragaye muri gahunda y'isuzuma ry'ingaruka kubidukikije n'imibereho myiza ndetse no muri gahunda yayo yo kuyikurikirana zashyizwe mu bikorwa muburyo bukwiriye.

Byongeye kandi, Gahunda isanzweho yo kubungabunga ibidukikije n'imibereho myiza izwi nka (ESMS) itanga uburyo bwo gukurikirana no kugenzura gahunda, aribyo bifasha umushinga kugera kubyo wiyemeje, nkuko biteganywa n'amabwiriza y'u Rwanda, amahame y'abatanga inguzanyo (cyane cyane IFC PS), kandi nkuko bisabwa na rwiyemezamirimo. Nkuko BSEZ yihariye uburenganzira mpamo bwa mbere k'umutungo, byumvikane ko abashoramari bazabona ibibanza muri BSEZ hagamijwe guteza imbere inganda n'ububiko bwazo. Ibi bikorwa remezo bizasabwa gukorerwa isuzuma ry'ingaruka ku bidukikije, imibereho myiza n'ubukungu ryihariye kandi ryoherezwe mu kigo cy'igihugu gishinzwe iterambere (RDB) mbere yo gutangira imirimo y'ubwubatsi n'ibikorwa by'inganda. Kubera ko ibyo bikorwa remezo n'ibikorwa bizakorerwamo bitazagenzurwa na BSEZ Ltd, BSEZ Ltd ntishobora kuryozwa uburyo bwo gusuzuma no gucunga ingaruka kubidukikije n'imibereho myiza n'izindi ngaruka kuri izo site. icyakora, BSEZ Ltd igomba kwemera inshingano zo kwita ku mutekano w'abashoramari kugirango babashe gucunga neza ingaruka kubidukikije ndetse n'imibereho yabo ku rwego rwuko:

- a) bubahiriza ibyangombwa bisabwa n'amategeko, cyane cyane itegeko rigenga ibidukikije No.48 /2018; na
- b) bagera ku rw'imikorere myiza rujyanye nuko BSEZ Ltd yiyemeje kubungabunga ibidukikije n'imibereho myiza.

Mu rwego rwo gushyira mu bikorwa inshingano zo kwita kubashoramari, ningombwa ko BSEZ Ltd ishira amabwiriza agenga ibidukikije, ubuzima n'umutekano agomba kubahirizwa n'abashoramari ndetse n'ibice bakoreramo byose mu cyanya cy'inganda imbere. Agomba kandi kubahirizwa mu bikorwa bya buri muni bibera muri BSEZ. Ibikubiye muri ayo mabwiriza ntabwo bigaragara muri iyi nyandiko y'isuzuma ry'ingaruka kubidukikije, imibereho myiza n'ubukungu.

Bitabangamiye ko ingamba zose zo gukemura no gukumira ingaruka zagaragajwe muri iri suzuma ry'ingaruka kubidukikije n'imibereho myiza na gahunda yayo yo kurikirirana zubahirizwa, ingaruka mbi zikomoka kuri uyu umushinga zizagabanywa kandi ingaruka nziza ziyongere.

